



HOUSE WITH SEA VIEWS IN HACIENDA LAS CHAPAS

 Hacienda Las Chapas

REF# R4100251 – €1,399,000



5
Beds



4
Baths



386 m²
Built



1788 m²
Plot

Detached Villa, Hacienda Las Chapas, Costa del Sol.
5 Bedrooms, 4 Bathrooms, Built 386 m², Garden/Plot 1788 m².

Setting : Close To Golf, Close To Sea, Close To Forest, Urbanisation.
Orientation : East, South East, South.
Condition : Good.

Pool : Private.

Climate Control : Fireplace.

Views : Sea, Garden.

Features : Covered Terrace, Fitted Wardrobes, Private Terrace, Ensuite Bathroom, Wood Flooring, Barbeque.

Furniture : Part Furnished.

Kitchen : Fully Fitted.

Garden : Private.

Parking : Garage, More Than One, Private.

Utilities : Electricity, Drinkable Water.

Category : Bargain, Cheap, Investment, Luxury, Reduced.

UNIQUE OPPORTUNITY

FANTASTIC VILLA for sale with a plot of 1788 m2 in the most exclusive area of Marbella, "Hacienda Las Chapas"

It has a built area of 385 m2 and is located in an oasis of peace and tranquility with a swimming pool, barbecue area, garden with mature trees and partial sea views.

The house has on the first floor 4 bedrooms with access to the balcony and 3 bathrooms, two of the bedrooms with en-suite bathrooms and an open office with views of the garden.

On the ground floor there is a spacious kitchen with access to the garden, a service bedroom, a toilet, double living room with fireplace, exit to the garden and to the barbecue area.

It has a covered garage but you can also park in the patio of the house about 5/6 cars.

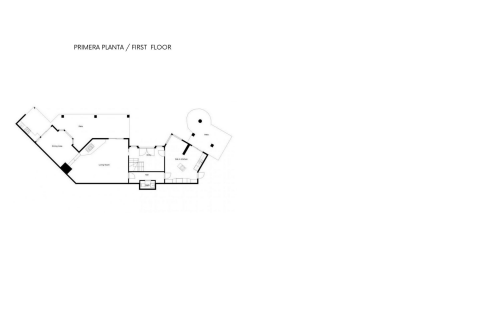
In the area you will find all kinds of services such as Pharmacies, Restaurants, Supermarkets.

Cabopino beach is 5 minutes away by car and has easy access to the highway, only 10 minutes from La Cañada Shopping Center, one of the largest in the area. Malaga International Airport is 20 minutes away.

The expenses for the community fee are € 172 per month.

Come visit it and you will see that you would love to live in such an exclusive area.





SEGUNDA PLANTA / SECOND FLOOR

